



DESIGN APPLICATION PACKET

SKORR DESIGN

+

JESUS PACHECO STUDIO

WWW.SKORRDESIGN.COM

WWW.JESUSPACHECO.COM

TABLE OF CONTENTS

- 3 WELCOME
Design Team
- 4 DESIGN PROCESS
The 5 Step Process
- 5 INSPIRATION KIT
Design Inspiration Ritual
- 7 APPLICATION
Residential
- 17 FAQs
Frequently Asked Questions
- 19 INVESTMENT GUIDE
Design Packages
- 22 BEYOND DESIGN
Construction Collaboration

DESIGN — TEAM

✉ SHAYNA@SKORRDESIGN.COM

☎ 305.744.2221

✉ JP@JESUSPACHECO.COM

☎ 786.622.7095

To Our Future Client,

Welcome. The fact that this kit found its way to you is not an accident.

What you are holding is more than a design application — it is an invitation to look at your space, and yourself, differently. We created this process because we believe that the best designs don't start with a blueprint. They start with a conversation, a feeling, a moment of clarity about what you truly want your home to give you.

This collaboration brings together two complementary ways of seeing. Shayna Orr of SKORR Design reads the land — understanding how energy moves through a space, how light and flow shape the way a place feels, and how to translate that into a visual concept that is uniquely yours. Jesús Pacheco brings the interior world outward, with a rare fluency in the materials, objects, and details that carry meaning. His approach is conscious and deeply personal — every selection rooted in who you are, where you've been, and what you want to surround yourself with.

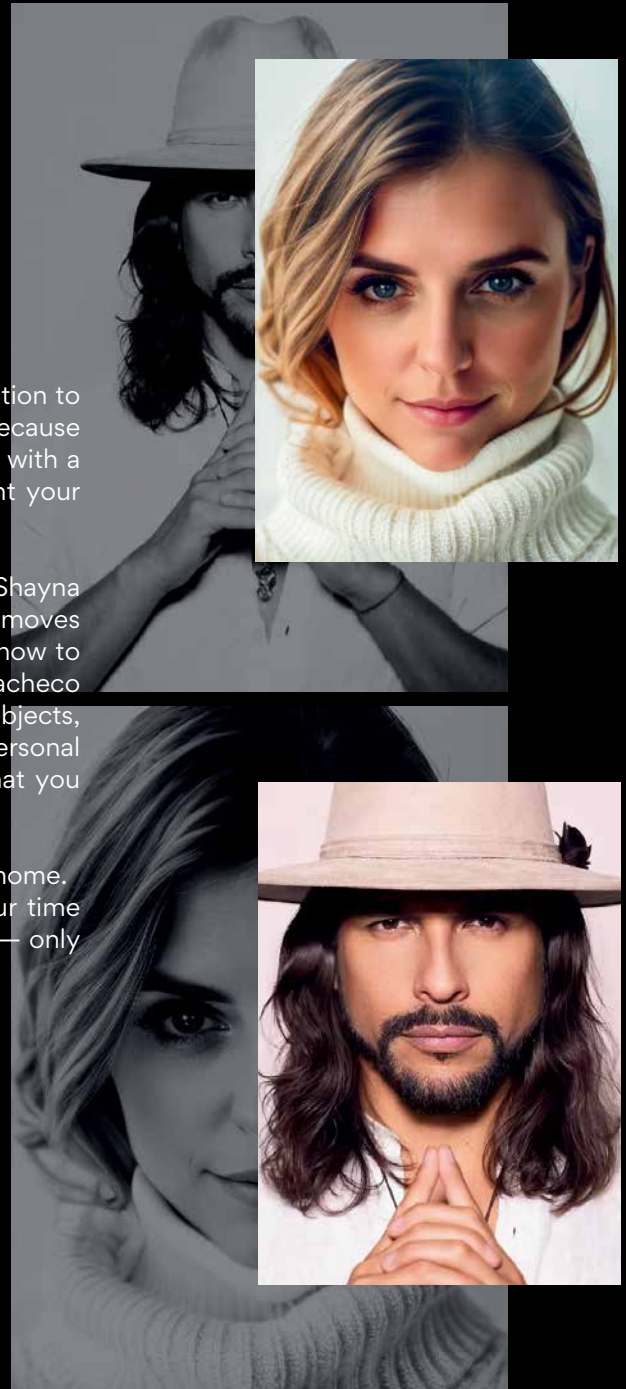
Together, we design spaces that don't just look beautiful. They feel like home. The application inside will guide you through that discovery. Take your time with it. Light the candle. Use the notebook. There are no right answers — only honest ones.

We look forward to hearing your story.

Shayna Orr — SKORR Design

Jesús Pacheco — Jesús Pacheco Studio

Jesús Pacheco
Shayna



SKORR Design, Inc.
Jesus Pacheco Studio
Miami, Florida

WWW.SKORRDESIGN.COM
WWW.JESUSPACHECO.COM

DESIGN PROCESS

01 DISCOVER AND CONNECT

After reviewing your application, we'll schedule a personal meeting or virtual consultation to go deeper — learning about you, your space, and what this project means to you.

02 CLIENT ON-BOARDING

Once we move forward together, you'll be formally welcomed into the process. This stage sets the foundation — aligning expectations, establishing the vision, and presenting your custom design proposal. Once approved, we begin the design process.

03 SITE MEETING

Our first meeting happens on location. We walk the space together, read the land, and begin to feel what's possible. This is where the design starts to come alive.

04 DESIGN

Through a series of collaborative presentations, your vision takes shape. Each round builds on the last — refining, detailing, and deepening until the concept is something you can truly feel before it's built.

05 APPROVAL AND BEYOND

Once the design is approved, the journey continues. Through our Design Quality Package, we stay by your side — selecting contractors, reviewing proposals, and making sure what gets built matches what we created together.

DESIGN INSPIRATION KIT



INSPIRATION RITUAL

INTENTIONS

We believe that intention shapes everything — including how a design begins. Before you dive into the application, we invite you to slow down, settle in, and let the elements in this kit set the tone.

RITUAL CHECKLIST

- Find a calm and peaceful space
- Make a cup of tea
- Light a candle
- Set out crystals
- Burn palo santo
- Take some deep breaths and center yourself
- Let the thoughts flow onto the notebook
- Dive into the application form

01 GET COMFORTABLE

Before you begin filling out the application form, we encourage you to create a sacred space for this ritual. Find a quiet and comfortable place where you can immerse yourself in the elements of the kit. Take a moment to center yourself, set your intentions, and open yourself to the possibilities.

02 SET THE MOOD

Delve into the contents of the box, each thoughtfully chosen for this moment. Make yourself a tea, light up a candle, clear the air with some palo santo, and set out some crystals for grounding energy. Utilize the accompanying checklist to thoughtfully curate the ambience that will fuel your design desires.

03 DAYDREAM

The application form is full of thought provoking questions to ignite your imagination. Before filling the application out, feel free to express any ideas inside the notebook. Let the process be a mindful exploration.

04 APPLICATION

Once you've completed the ritual, you are ready for the application form. Take your time moving through each section — some questions may surprise you. That's intentional. What you share here becomes the blueprint for everything we create together. Don't overthink it. The best answers come from the first impulse.

THE ELEMENTS

The Design Inspiration Kit is thoughtfully designed to represent the five elements—wood, water, metal, earth, and fire—symbolizing the natural forces that inspire our designs. Each element carries its own essence and intention, setting the scene for you to tap into the energy you want to cultivate in your landscape design.

CANDLE · FIRE

Fire symbolizes passion, transformation, and inspiration. Light the candle as a representation of igniting your creative spark.



PALO SANTO · WOOD

The wood element represents growth, creativity, and new beginnings. Palo Santo, known for its cleansing and purifying properties, prepares the space for fresh ideas and transformative visions to take root.



TEA · WATER

Water symbolizes flow, adaptability, and emotional balance. The tea packets included were hand selected for their mood enhancing qualities, allowing you to connect with your creativity and desires for your outdoor sanctuary.



CRYSTALS · EARTH

Earth represents stability, grounding, and harmony. Moss Agate is known to enhance harmony, connection to nature, and overall well-being, making it an ideal gemstone for fostering a tranquil and balanced environment. Feel free to bring out your own crystals as well.

PEN · METAL

The metal element embodies precision, clarity, and strength. Use the metal pen to put your dreams into words, providing us with insights into your vision and aspirations.

LANDSCAPE DESIGN
APPLICATION

CLIENT INFORMATION

"Let yourself be silently drawn by the strange pull of what you really love. It will not lead you astray."

- Rumi

APPLICATION HUB



This application is your first act of creation. Complete it in the way that honors you — pen to paper, or digitally at skorrdesign.com/application via the QR code provided.

PRIMARY CONTACT
SECONDARY CONTACT
PROPERTY INFORMATION

_____	_____	_____
first name	last name	nickname
_____	_____	_____
phone	email	date of birth
_____	_____	_____
mailing address	city	state
_____	_____	_____
country	zip code	occupation

_____	_____	_____
first name	last name	nickname
_____	_____	_____
phone	email	date of birth
_____	_____	_____
mailing address	city	state
_____	_____	_____
country	zip code	occupation

_____	_____	_____
project address	city	state
_____	_____	
country	zip code	
_____	_____	_____
lot size	house size	project scope / area

project stage

- new construction
- renovation
- land only (no plans)

current team on board

- architect
- interior design
- general contractor

regulatory entities

- HOA
- coastal / environmental
- historic preservation

CLIENT PROFILE

RESIDENTIAL APPLICATION

FAMILY

Tell us about your family dynamic.

Who calls this home? (names, ages, and who's around most)

Any animal friends in the home?

Is there anyone else who is a regular presence in the home? (extended family, frequent guests, staff)

HOME

How long have you lived in the home?

Is this your primary residence, or do you split time? (if seasonal, which months are you here most?)

How long do you see yourself owning/residing in the home?

When does your day naturally pull you outside? (morning, afternoon, evenings — all of the above?)

Tell us about how you gather. (intimate dinners or full house? Spontaneous or planned? How often, and how many?)

ACTIVITIES

When imagining your project complete, how do you envision using the space? Check all that inspire you.

Connect

- outdoor cooking and entertaining
- outdoor dining
- pool parties
- large events / fundraisers
- sports watch parties
- large family celebrations
- family play and bonding
- host workshops / retreats
- business meetings
- club meetings

Energize

- swimming
- video production / photography
- creative work / productivity
- music and performance
- sports and recreational activities
- fitness and exercise
- gardening and planting
- children's play
- pet's play and free space
- space for farm animals

Restore

- relaxation and quiet reflection
- meditation / mindfulness practice
- reading and resting
- yoga and mobility
- nature observation / birdwatching
- sunbathing
- outdoor movie nights
- cozy nights by the fire
- intimate connection
- stargazing and nighttime ambiance

Feel free to list any other activities you enjoy here:

DESIGN CONNECTION

RESIDENTIAL APPLICATION

Close your eyes for a moment. When you step into this finished space, what do you want it to evoke — for yourself, for the people who will share it with you? Name that feeling, then connect it to three elements that would bring it to life.

EXAMPLES

EMOTION

ELEMENT

connection

fire pit lounge
play ground
outdoor dining area

fun

swimming pool volleyball
children's play area
outdoor movie projector

EMOTIONAL CONNECTION

Empty box for emotion

Three horizontal lines for element

Empty box for emotion

Three horizontal lines for element

Empty box for emotion

Three horizontal lines for element

Empty box for emotion

Three horizontal lines for element

Empty box for emotion

Three horizontal lines for element

Any additional notes to add:

DESIGN HYPNOSIS

RESIDENTIAL APPLICATION

Set aside a quiet moment for this section. There are no right answers — only honest ones. Use the notebook in your kit to let your thoughts wander first, then bring what resonates back to the page here.

EXPLORATION QUESTIONS

HOME OASIS

Imagine you've returned to this home from a long trip. You step outside to ground and relax in this new outdoor space you've created. What elements would make it feel like home and a destination for you?

MORNING RITUALS

Morning is yours. No agenda, no rush. Your favorite morning beverage in hand, bare feet, eyes still adjusting — where do you find yourself wandering to welcome your day?

ATMOSPHERE

Imagine you need a moment to yourself and you step outside. Where do you gravitate — near the water, by the fire, tucked under shade? Surrounded by green, grounded on the grass, perched somewhere with a view? Paint that picture.

FAMILY GATHERINGS

Envision a gathering of your closest family and friends in this outdoor space. What kind of atmosphere and experience do you want to create for them?

NIGHTTIME ENTERTAINMENT

Think about a vibrant evening gathering, a large event, or a party. How do you envision the energy and interactions in this space? What specific elements or spaces could enhance these experiences for you and your guests?

DESIGN HYPNOSIS

RESIDENTIAL APPLICATION

Set aside a quiet moment for this section. There are no right answers — only honest ones. Use the notebook in your kit to let your thoughts wander first, then bring what resonates back to the page here.

EXPLORATION QUESTIONS

INSPIRATION

Has a space ever moved you — a hotel, a garden, someplace in nature, a place you visited once and never forgot? What was the essence of the place?

NATURAL ELEMENTS

Do you find yourself particularly drawn to a natural element — sitting near water, open air and a breeze, the warmth of fire, lush surrounding greenery?

PERSONAL TOUCH

What personal touches or unique elements would truly make this space yours? Perhaps a special art installation, a large sculptural gemstone, or integration of a special car?

EXPERIENCES

Is there something you've always wanted to do, have, or feel outside — but never quite had the space for? What would change if you did?

WELLBEING

A goal is to create an outdoor space that not only reflects your desired aesthetics but also contributes to your wellbeing — emotionally, spiritually, or physically. What part of your wellbeing could this space contribute to, and how?

FUTURE OUTLOOK

Imagine sitting in your space years from now. What is a fond memory it holds?

DESIGN STYLE

RESIDENTIAL APPLICATION

design
style
quiz



Take the design style quiz at skorrdesign.com/application or scan the QR code provided. The quiz calculates your personalized style as a percentage across each category — because it's rare anyone is just one style.

Enter your scores into the corresponding boxes below, and please screenshot your results as we do not save any quiz data.

DESIGN STYLES

Classical

ELEGANT, SYMMETRICAL

A formal timeless style characterized by symmetry, balance, and well-defined lines. It often features structured gardens, geometric shapes, and elegant elements.

Examples include neatly trimmed hedges, statues, and ornate fountains.

score:

Contemporary

SLEEK, WARM

Clean lines, minimalism, and a focus on function define contemporary design. It features sleek surfaces, modern materials, and a blend of indoor-outdoor living.

Examples include modern teak furniture with crisp edges, neutral color schemes, a blend of materials like smooth stones and a lush lawn, or clean wood and concrete.

score:

Coastal

AIRY, CASUAL

Inspired by coastal regions, this style emphasizes relaxed and airy vibes. It incorporates natural materials, soothing color palettes, and elements like beach grass, pebbles, and water features.

Examples include outdoor lounging areas with breezy fabrics, pergolas adorned with vines, and water features resembling serene coastal settings.

score:

TROPICAL

LUSH, VIBRANT

This exotic style brings the feeling of a tropical paradise to your space. It includes lush foliage, vibrant colors, and elements that create a get-away-like atmosphere.

Examples include palm trees, hammocks, and outdoor lounges with bold colors.

score:

MODERN

STREAMLINED, CLEAN

Similar to contemporary but with a specific focus on iconic mid-century design. It includes open spaces, minimal ornamentation, and a mix of natural and industrial materials.

Examples include Eames-style chairs, flat roofs, and large windows that frame outdoor views.

score:

Natural

EARTHY, COZY

Celebrating the beauty of nature, this organic style uses native plants, stone, and wood to create a harmonious and sustainable environment. Could have a rustic feel.

Examples include wildflower gardens, natural stone pathways, and wooden decks that blend seamlessly with the surroundings.

score:

Bohemian

ECLECTIC, ARTISTIC

Eclectic and free-spirited, this style combines various patterns, colors, and textures. It's characterized by a mix of cultural influences, handmade items, and a relaxed atmosphere.

Examples include colorful rugs, furniture with unique character, and an array of lively plants in distinctive vessels.

score:

Cottage

QUAINT, CHARMING

A style that exudes comfort and charm, embraces a relaxed and inviting atmosphere. It often incorporates vintage furnishings, floral patterns, and weathered materials, creating a cozy and nostalgic ambiance.

Examples include full vibrant whimsical gardens, rustic wooden features, and a warm, lived-in feel.

score:

INDUSTRIAL

URBAN, EDGY

This style draws inspiration from urban environments, showcasing exposed brick, metal accents, and sleek lines. It's a fusion of form and function, celebrating simplicity and utilitarian aesthetics.

Examples include open spaces, minimalist décor, and a mix of raw materials, a mix of urban and modern vibes.

score:

SITE ANALYSIS

RESIDENTIAL APPLICATION

Your current outdoor space is the canvas. This section focuses on terrain, sun exposure, wind patterns, views, and water features — elements that will guide how we design with your environment, not against it. While we'll go deeper during our site visit, this is your chance to observe your space with fresh eyes.

Side note: if the project site is new construction, or you have not yet spent significant amount of time on the property, just answer to the best of your ability.

THE ENVIRONMENT

TERRAIN

OBSERVATIONS //

Are there any slopes, inclines, or unique features that catch your attention? How does the existing terrain impact the flow of your outdoor space? Reflect on how you envision utilizing these natural elevations in your design. Additionally, if there are any terrain challenges you'd like to address, please provide your insights.

SUN

OBSERVATIONS //

Observe the path of the sun throughout the day. Are there areas that receive ample sunlight, while others remain shaded? Do you like the way the sun falls into the home in the morning? Do you have to pull shades down in the afternoon? Let us know what you appreciate or would like to change about how the sun falls in certain areas at different times.

WIND

OBSERVATIONS //

Are there specific areas that tend to be more breezy or sheltered? How does the wind direction affect your comfort when spending time outdoors? If you appreciate the gentle cool breeze, let us know. Likewise, if you find certain areas to be too windy for relaxation, share your thoughts. Prevailing wind patterns will assist in optimizing your outdoor experience.

WATER

OBSERVATIONS //

Are there existing water features, such as ponds, fountains, or pools? If you have plans to add these features, what kind of experience would you like to create? Do you need to drown out street noise? Whether it's the calming sound of a fountain or the sight of a tranquil reflection pool, share your thoughts on how water could enhance your outdoor environment.

VIEWS

OBSERVATIONS //

Consider the views from different vantage points on your property. Are there any stunning vistas you'd like to frame or enhance? Are there areas where you'd like to create a private oasis by screening out certain views? Consider views from inside as well. Think about how the surrounding landscape interacts with your space and how you'd like to shape those interactions.

SITE INFORMATION

RESIDENTIAL APPLICATION

Whether this is a blank lot or a space you've lived in for years — take a moment before this page. New construction clients, you're starting with pure possibility. Renovation clients, try to see your space with completely fresh eyes — none of what exists is permanent unless you want it to be. What would you keep if you could have anything? What have you been working around that you'd actually love to change?

RENOVATION

EXISTING ELEMENTS

For each element, use the visual cues provided to make your selection:

- indicates you would like to keep the element in place as it is.
- indicates you would like to renovate the element to enhance its appearance or functionality.

Review the elements below and mark what exists on your property. For anything that's there, tell us whether you'd like to keep it as-is or renovate it. If something needs to go entirely — leave it blank. We'll sort that out together.

- | | | |
|--|--|---|
| <input type="checkbox"/> pool | <input type="checkbox"/> large trees | <input type="checkbox"/> fire feature |
| <input type="checkbox"/> spa | <input type="checkbox"/> art installations | <input type="checkbox"/> water feature / fountain |
| <input type="checkbox"/> pool house | <input type="checkbox"/> retaining walls | <input type="checkbox"/> pond |
| <input type="checkbox"/> casita / ADU | <input type="checkbox"/> fencing / gates | <input type="checkbox"/> driveway |
| <input type="checkbox"/> deck | <input type="checkbox"/> outdoor kitchen | <input type="checkbox"/> gardens / planting areas |
| <input type="checkbox"/> hardscape patio | <input type="checkbox"/> outdoor storage | <input type="checkbox"/> dock |
| <input type="checkbox"/> pergola / patio cover | <input type="checkbox"/> arbor | <input type="checkbox"/> other: _____ |

SITE PHOTOS

PHOTO UPLOAD

Photo upload is optional at this stage — once we begin the concept phase, we'll conduct a full site visit. That said, a few casual shots help us arrive better prepared.

To upload photos of your site, follow these simple steps:

QR CODE

Scan the provided QR code using your smartphone's camera. This will take you directly to the application hub on our website, where you can access the photo upload section.

WEBSITE

You can also visit www.skorrdesign.com/application on your web browser. This will lead you to the application hub, where you can easily upload your photos.

APPLICATION HUB



Photo Tips:
Capture the site from various angles, including shots from the back looking towards any structures, different corners of your property, and any distinct features.

Show the surrounding environment, neighboring properties, and nearby streets to give us a comprehensive understanding.

NOTES //

SUBMISSION FORM

RESIDENTIAL APPLICATION

At SKORR Design, we believe the best work happens when both sides show up fully — with clarity, trust, and a shared vision. These terms exist to protect that. Please take a moment to read through before signing.

APPLICATION SUBMISSION TERMS

By submitting this application, you acknowledge and agree to the following terms:

1. Application Review:

Jesus Pacheco Studio / SKORR Design, Inc. welcomes all applications, but please note that submission does not guarantee acceptance. Applications will be reviewed based on the provided information and our design team's availability.

2. Non-Discrimination:

Jesus Pacheco Studio / SKORR Design, Inc. does not discriminate on the basis of race, color, religion, gender, gender identity or expression, sexual orientation, national origin, genetics, disability, or age in its application review process.

3. Confidentiality:

The information you provide in this application will be treated as confidential and used solely for the purpose of evaluating your eligibility for our design services.

4. Application Completion:

Please ensure that all sections of the application are accurately completed. Incomplete applications may not be considered.

5. Photo Submission

By uploading photos of your site, you grant Jesus Pacheco Studio / SKORR Design, Inc. permission to use these photos for the purpose of design evaluation and project planning.

6. Acceptance Notification:

If your application is accepted into the next stage, a Jesus Pacheco Studio / SKORR Design, Inc. representative will contact you to schedule our application interview call.

Please note that Jesus Pacheco Studio / SKORR Design, Inc. reserves the right to update or modify these terms at any time.



TERMS OF AGREEMENT

SIGNATURES

full name

phone

email

signature

date

LANDSCAPE DESIGN

FAQS

FREQUENTLY ASKED QUESTIONS



HOW DO I SUBMIT AN APPLICATION FOR YOUR DESIGN SERVICES?

Complete the physical application included in your kit, or submit digitally at www.skorrdesign.com/application via the QR code. Either way works — choose what feels right for you.



IS THERE AN APPLICATION FEE?

None. Submitting your application is complimentary.



IS EVERY APPLICATION ACCEPTED?

We work with a limited number of clients at a time to ensure every project receives our full attention. Selection is based on project alignment and availability.



WHAT HAPPENS AFTER I SUBMIT MY APPLICATION?

We'll review your application and reach out to schedule a personal meeting or virtual consultation to go deeper.



HOW DOES THE CLIENT ON-BOARDING PROCESS WORK?

Once we move forward together, we'll align on vision, expectations, and present your custom design proposal. From there, the design process begins.



WILL I HAVE AN ON-SITE MEETING WITH YOUR TEAM?

Yes — always. We walk the property together, read the space, and let the land inform the design from the very beginning.



HOW DOES THE DESIGN PHASE WORK?

Through a series of collaborative presentations, your concept takes shape — each round building on the last until the design feels completely right. Every project is unique, and our involvement is tailored accordingly — ranging from concept design all the way through technical documentation and contractor bidding.



WHAT HAPPENS AFTER I APPROVE THE DESIGN?

The next step depends on where you are in the process. If you have an existing contractor or project team, we'll coordinate directly with them to ensure the design is executed as intended. If you're still selecting a contractor, our Design Quality Package keeps us involved through the entire process — from proposal review and contractor selection all the way through construction oversight — making sure what gets built matches what we created together.



CAN I INVOLVE MY OWN CONTRACTORS OR PROFESSIONALS DURING THE DESIGN AND EXECUTION PHASES?

Absolutely. We welcome collaboration with your existing team — architects, contractors, or other professionals — and will coordinate seamlessly to bring the vision to life.



WHAT IF I HAVE MORE QUESTIONS OR NEED CLARIFICATION?

Reach out to us directly:

jp@jesuspacheco.com

786.622.7095

jesuspacheco.com

LANDSCAPE DESIGN

INVESTMENT
GUIDE

DESIGN

PACKAGES



OUR MISSION

This section outlines your design investment options — from initial concept through construction documentation and beyond. We believe in full transparency when it comes to what we offer and what it costs. Our packages are structured to meet you where you are in the process, and to scale with your project as it grows and evolves. Whatever level of involvement you need, we can meet you there.

Great design takes time — often a year or more from first conversation to finished space. We take that seriously, and we take it personally.

Our role is to translate what you feel into something you can build. That means asking the right questions, listening carefully, and guiding you through every decision with clarity and intention. We don't just hand over drawings — we stay present through the entire journey, from the first sketch to the final walkthrough.

The projects we are most proud of are not just the ones that look extraordinary — they are the ones where the client feels the space was made exactly for them. That outcome requires trust, collaboration, and time. We are committed to all three.

DESIGN PACKAGES

INVESTMENT INCLUSIONS

Every project begins the same way — with a conversation, a site visit, and a commitment to understanding your vision before we put a single line on paper. What follows is tailored entirely to you.

PRICING STRUCTURE

Every project is unique. The ranges below are provided as a general guideline — a customized proposal will be provided following your design consultation, based on property size, scope, and complexity.

CONCEPTUAL DESIGN PACKAGE

Starting from 0.5% of Property Value

- Exploration meeting
- Mood board
- 3D design concept renderings
- Pool design
- Fundamental 2D layout plan
- 2 rounds of revisions

FULL DESIGN PACKAGE

Starting from 1% of Property Value

- Everything in Conceptual, plus:
- Specific material selections
- Furniture & fixture selection
- Comprehensive construction documents
- Engineering & permit coordination

VISUALIZATION UPGRADE

10-20% of Conceptual package fee

- Nighttime renderings
 - Video walkthrough
 - 360° virtual tour
 - VR immersive experience
- (Available as an add-on to the Conceptual Design package only.
Final percentage based on project scope and complexity.)

DESIGN QUALITY PACKAGE

Starting from 10-15% of Construction Costs

- Construction Proposal Analysis
- Contractor-client design liaison
- Change order management
- Real-time design revisions
- Collaboration with additional trades
- Milestone visits and final walkthrough

BEYOND DESIGN

DESIGN QUALITY PACKAGE

The design is only the beginning. The Design Quality Package is offered to relieve our clients of the constant ebbs and flows of construction. We ensure what gets built matches what we created together – serving as the translator between your vision and the construction team. Instead of contractors coming to you with problems, we intercept the noise and bring you only the solutions.

INCLUSIONS

- **Curated Contractor Recommendations:** We sift through local, trustworthy contractors, presenting you with a list that aligns with our standards of quality and your needs.
- **Proposal Analysis:** We dissect and evaluate contractor proposals for you, ensuring each material specification aligns with our original design plans, while highlighting any omissions or deviations.
- **Milestone Site Visits:** Scheduled site visits at critical junctures of the project allow us to oversee the quality and fidelity of work, making certain it aligns with our shared vision.
- **Contractor Liaison:** We act as your primary point of contact with contractors, sparing you the administrative burden and ensuring your time is focused on what really matters.
- **Change Order Management:** Should there be any need for design alterations, we correspond directly with the contractor. We'll offer our professional recommendations to make sure any changes enhance, rather than compromise, the overall quality of the design.
- **Final Walk-Through:** A concluding inspection ensures that every design element has been impeccably executed, leaving you with a space that not only meets but exceeds your expectations.

DESIGN QUALITY PACKAGE

Starting from 10-15% of total
construction costs

Additional fees not included in the design investment: site survey, engineering, permitting, HOA submissions, and travel where applicable. Scope changes initiated after agreement may affect cost and timeline.

BEYOND DESIGN



WORKING TOGETHER

Once we receive your application, we'll reach out to schedule a personal meeting or virtual consultation — a chance to go deeper on your vision, your site, and what this project means to you.

If we're the right fit, you'll receive a customized proposal outlining your design investment, deliverables, and timeline. From there, we move forward together.

Every decision that follows serves one purpose — bringing what lives in your imagination into the physical world. We don't just design spaces. We translate visions into reality.



We look forward to receiving your application and feel deeply honored by the trust you're considering placing in us. Recognizing that a home is not merely a structure but a sanctuary for life's most meaningful moments, we don't take your decision lightly. Thank you for considering us.

SKORR Design + Jesus Pacheco Studio